



Applications

- Equally useful for both new structures as well as retrofits.
- Intuitive tool that enables comparisons between buildings, campuses, and departments and allows assessments to be made in order to foster improved energy awareness.
- Offers a real-time “network status” graphical viewlet which allows for immediate color-coded visual identification of “device health” or other problem areas in the connected EC-Net^{AX} network.
- Has a flexible Graphical User Interface (GUI) by integrating PX equipment views and floor plans alongside standard charts, KPI analyses, and third-party websites.
- Enables clear visualization and documentation for building commissioning, as well as tools for validation of sustainable designs.
- Enables quick visualization of locations that are deviating from their historical performance or operating outside the norm for similar structures.
- Provides timely tracking of enhanced savings as a result of investments in conservation or capital projects.

Features & Benefits

- **User-Centric** – Each user can create, view and modify their own dashboard “on-the-fly” in minutes, thus enabling them to focus on current or rapidly changing conditions for their area of responsibility.
- **Viewlet Export Options** – Viewlets can be exported as an image file, or as an image within a PDF file. Their tabular data can also be exported in CSV format for instant use in reports and technical documents.
- **Virtual Naming** – Data mapped into EC-Net^{AX} EnerVue can be given “friendly” (recognizable) names without impacting the underlying control database.
- **Data Normalization** – Provides the ability to normalize data such as energy consumption and account for differences in square footage, etc.
- **Multi-Account Option** – EC-Net^{AX} EnerVue options include the ability for location specific data and users to be partitioned among multiple virtual “accounts”. This feature allows EC-Net^{AX} EnerVue to be deployed across numerous divisions or entities while segregating users and their data from other operational nodes.

Overview

EC-Net^{AX} EnerVue is a configurable, graphical Web-based energy management dashboard application that provides rapid identification of real-time and historical trends in key areas of operations, including energy use, mechanical and electrical systems, operational efficiencies, and critical metrics. EC-Net^{AX} EnerVue provides the opportunity for users to quickly identify issues, assess relationships, and take action in order to optimize resource efficiencies and sustainability by reducing volumes of data from disparate systems into visual knowledge.

Due to the wide range of potential users, from the highly technical to the non-technical, EC-Net^{AX} EnerVue was designed to provide each user with their own unique dashboard client. The dashboard can easily be set up and modified from a growing library of “viewlets” by any user without affecting any other users’ preferences and settings.

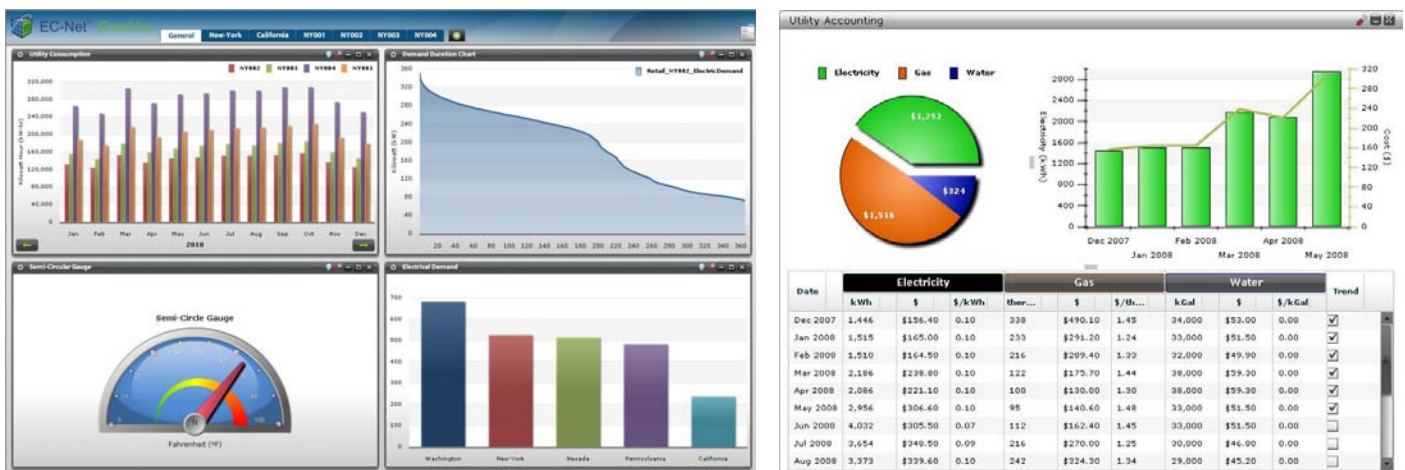
For single sites or smaller footprints, EC-Net^{AX} EnerVue will run as a stand-alone module on an EC-BOS^{AX}, eliminating the need for additional PCs based on Software as a Service (SaaS). EC-Net^{AX} EnerVue allows owners to start small, yet remains scalable to fit any company’s growing needs.

EC-Net^{AX} EnerVue offers an extensive library of optional viewlets that permit the analysis of various data, histories, and metrics, including energy trends, building comparisons, weather data, network status, consumption efficiencies, key performance indices, and more. EC-Net^{AX} EnerVue can even display Web pages hosted by a third party, thus preserving prior investments while enabling side-by-side comparisons of operating graphics with related variables and performance trends.

Features & Benefits

- **Equivalency Conversions** – Allows for “one-click” display of selected trends in equivalent units, such as kWh to dollars or metric tons of CO₂.
- **Kiosk Mode** – Simplified display of normalized data by continuously cycling through the user’s viewlets. This display can foster awareness and support, while highlighting the energy initiatives of corporate and public sustainability awareness campaigns.
- **Informational Screen Tips** – Customizable screen tips enable the dashboard’s administrator to present EC-Net^{AX} EnerVue end users with clarifying information, educational tips, or other relevant information prior to displaying a viewlet in kiosk mode.
- **Auto Discovery Wizard** – Allows users to efficiently identify and map the information from many sources, including meters, databases, or automation systems into multiple viewlets.
- **Facility & Business Data** – Provides integrated views of facility contribution to business profitability, such as energy cost per production unit.
- **EC-Net^{AX} EnerVue Guest Accounts** – Guest accounts permit administrators to build views for a target audience, but prevent the guest users from accidentally modifying the intended setup. This feature helps protect important configurations while “publishing” information to a large audience.
- **EC-Net^{AX}** – Uses existing EC-Net^{AX} user rights to enable maximum management flexibility.

User Interface Features



A user’s setup can be configured, exported, printed, and presented within minutes, not hours.

Related Products

Standard Viewlets

Resource Consumption
Circular Gauge
Point Table
History Line Chart
Pie Chart
Column Chart
PX Page Viewlet
Web Page Viewlet
Semi-Circular Gauge
Virtual Utility Meters
Green Tips Slide Show
Digital Totalizer Viewlet

Optional Viewlets

Ranking Comparison
Utility Performance Index
Demand Duration
Network Health
Utility Accounting
Columnar Drill Down
Pie Chart Drill Down
Baseline Comparison
Point Line Chart
Dual Axis
History ColorGrid
Weather Correlation
Year-Over-Year
Event History Timeline
Weather Normalization Viewlet
Cross Correlation Analysis
Solar Energy Generation

Optional AHU Diagnostics Package

Space Temperature Compliance
AHU Setpoint Efficiency
Cooling vs. Supply Air Temperature
Heating vs. Supply Air Temperature

Other

Viewlet Web Publisher
Utility Data Import
Optional Viewlet Bundle¹

¹ Bundle includes all (except Solar and AHU) optional viewlets. This applies to optional viewlets at time of original purchase.

Controller/Server Platform



EC-BOS-2^{AX} Compact, embedded control/server device

EC-BOS-6^{AX} Compact, embedded control/server device

Requirements

EC-Net^{AX} *EnerVue* is designed to run as a module on an EC-Net^{AX} station and utilizes the trusted Niagara^{AX} licensing and security model. The EC-Net^{AX} *EnerVue* service is then accessible to all end users through a standard web browser, such as Internet Explorer®, Mozilla Firefox®, and Safari®.

EC-Net^{AX} *EnerVue* integrates real-time and historical data available in an EC-Net^{AX} Supervisor and can also run on an EC-BOS^{AX}. A built-in discovery and mapping wizard extracts only the approved point and trend data.

EC-Net^{AX} *EnerVue* requires that connected EC-Net^{AX} Supervisors and EC-BOS^{AX} have oBIX (Open Building Information Xchange) enabled. These data feeds enable EC-Net^{AX} *EnerVue* to combine business and control data for optimal visual knowledge of your facility performance.

- **EC-Net^{AX} Supervisor** – An EC-Net^{AX} Supervisor is often the best location for EC-Net^{AX} *EnerVue* because long term trends are generally stored here to manage a network of EC-BOS^{AX} controllers or to monitor points from third party servers. An offline version is available for sites that do not have Internet access.
- **EC-BOS^{AX}** – For single sites or smaller footprints, EC-Net^{AX} *EnerVue* will run as a stand-alone module on an EC-BOS^{AX}, eliminating the need for additional PC-based or SaaS software.

Installation

Distech Controls' EC-Net^{AX} *EnerVue* v1.0.5 can be downloaded from SmartInstaller on www.distech-controls.com.

For additional details on installing EC-Net^{AX} *EnerVue*, refer to the "Getting Started" section of the EC-Net^{AX} *EnerVue* User Guide available on our website www.distech-controls.eu.

Licensing

If you already know the Host ID of the EC-Net^{AX} Supervisor or EC-BOS^{AX} on which EC-Net^{AX} *EnerVue* will be installed prior to purchasing the product, please ensure to include it when your purchase order is placed. If the Host ID is not known at the time of order, please contact the Distech Controls Customer Service team once the Host ID is available. A valid certificate and license will then be sent to you via email, which must be installed prior to using EC-Net^{AX} *EnerVue*.

Specifications subject to change without notice.

Distech Controls and the Distech Controls logo are trademarks of Distech Controls Inc.; Niagara^{AX} Framework is a registered trademark of Tridium, Inc.; BACnet is a registered trademark of ASHRAE; Periscope is a trademark of Activelogix; Mozilla Firefox is a registered trademark of the Mozilla foundation; Internet Explorer is a trademark of Microsoft Corp.; Safari is a registered trademark of Apple Inc. All other trademarks are property of their respective owners; All specifications are subject to change without notice or liability to provide changes to prior purchasers. Information and specifications published here are current as of the date of publication of this document; Products or features contained herein may be covered by one or more U.S. or foreign patents.



O5DI-DSENERV-10E

EC-Net^{AX} *EnerVue*

www.distech-controls.eu

3/3