

Overview

Londisplay 3 is an advanced HMI package that includes a Log Manager.

The Londisplay 3 HMI allows you to create a custom visual interface for your building automation projects. While in *Design* mode you can easily create a comprehensive graphical environment of the facility from top-level site plans to equipment details, adding menus, animations, text boxes and navigation buttons within graphics pages. Then switch Londisplay 3 into *Run* mode to display and interact with network data points and information and launch any LNS based plug-ins directly from the application.

The Londisplay 3 Log Manager allows you to map any network variable through the programmable controllers (controllers configured by EC-Program only), for historical and real-time trending. Logging conditions include differential, variations by specified amount and configurable time basis. The logs and trends are displayed through a fully customizable graphical interface, with options of displaying one or multiple logs, and can be exported to both Microsoft Excel® and Microsoft Access® formats.

The Londisplay 3 suite consists of an ideal mix of software modules such as a User Manager to complement your LNS database management tool. At Distech Controls, we understand the needs of systems integrators and installers – our products are designed for ease of use, reliability and flexibility.

Applications

Londisplay 3 HMI (Human Machine Interface)

- Create building automation system HMIs while in *Design* mode to monitor and control real-time information for all devices on the network when in *Run* mode.

Log Manager

- Configure and manage logs and events for programmable devices (controllers configured by EC-Program only) on the network.

Distech Controls Browser

- Used to monitor and manage network variables as well as configuration properties.

Mini Director

- Acts as an independent director to launch plug-ins to monitor, configure and program devices.

User Manager

- Universal user manager which manages access rights for all current generation Distech Controls products.

Features & Benefits

- Londisplay's *Design* mode can create a comprehensive graphical environment of the facility from top-level site plans to equipment details, adding menus, animations, text boxes and navigation buttons within graphics pages using an easy-to-use GUI.
- Use Londisplay's *Run* mode to display and interact with network data points and information and launch any LNS based plug-ins directly from the application in real time.

Product Warranty & Total Quality Commitment

All Distech Controls product lines are built to meet rigorous quality standards and carry a two-year warranty. Distech Controls is an ISO 9001 registered company. Distech Controls' products provide both the contractor and the end user with the flexibility of using "best-of-breed" products in system design.

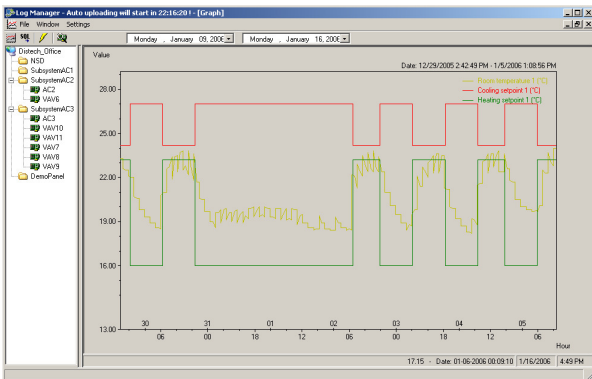
Software Features

Londisplay HMI Builder

- Graphics and Design:
 - Supports widely used image files such as .bmp, .jpg, .gif, .wmf, and .ico.
 - Supports animation in the form of AVI video files.
 - The only limit on the number of graphic pages is the size of your hard disk. Londisplay 3 allows you to set up extensive monitoring of data points and use the full potential of your PC.
 - Supports conditional text strings, images and animations based on system values.
 - Design of graphic pages is facilitated with the "drag and drop" tool bar.
 - Page configuration is saved in a text file permitting modifications through a text editor, dramatically reducing design time.
 - Switch from the Design mode to Run (user) mode with one click.
- Monitoring and Control:
 - Supports Device Resource Files (.DRF) - displays any SNVT or UNVT from a LonWORKS device.
 - Support Distech Controls' free programmable controller internal points.
 - Only the values of the active page are refreshed to reduce network traffic. The job size is never an issue when it comes to network congestion.
 - Modify variables from within the HMI in Run mode.
 - Buttons can be configured to directly open other applications, such as device and system plug-ins.

Log Manager

- Used only in conjunction with Distech Controls EC-Program Plug-ins.
- Continuous logging done locally in the controllers
- Manage log uploads by scheduling automatic log retrieval or manually uploading them from a free programmable device
- Data interpretation and trend analysis is greatly facilitated thanks to graphical charts and powerful SQL queries
- Customize data plots with full control over size, colors, legend and display method
- Export data to multiple formats (Microsoft Access, Microsoft Excel and Plain Text)
- Full control over polling cycles for logging



Londisplay 3 System Requirements

Operating System:	Windows XP, Vista Home Premium, Business or Ultimate
Processor:	500MHz or higher (XP) / 1GHz or higher (Vista)
Memory:	256MB RAM min (XP) / 1GB RAM min (Vista)
Hard Drive:	500MB min (XP) / 40GB min (Vista)
Display:	Super VGA (800x600) min (1024x768 recommended)
Accessories:	CD-ROM drive, mouse or other Windows-compatible pointing device
Network Interface:	LonWorks network interface required

User Manager

- Manage and create user groups and individual accounts for all current generation Distech Controls software products.
- User groups can be set according to administrator, programmer, power user, user or guest levels and permissions are granted for read, write and different levels of access to the different levels.

MiniDirector

- Enables the user to directly launch plug-ins, and configure controllers for faster access to configuration options (i.e. during air balancing of VAV boxes)
- Especially useful for users that have a stand-alone installation of Londisplay without any LNS network management tool
- Can be used by non-LNS software to launch Distech Controls plug-ins

Distech Controls Browser

- Allows Power Users to browse and modify network variables and configurations properties using a hierarchical tree view interface.
- If Lonwatcher 3 is installed on the PC, it is possible to drag and drop selections of the network variables and configuration properties directly into the Distech Controls Browser.

Specifications subject to change without notice.

© Copyright Distech Controls Inc. First printing - January 2006. Printed in Canada

Distech Controls logo is a trademark of Distech Controls Inc.; LonWORKS, LON and LNS are registered trademarks of Echelon Corporation; Niagara^{AX} Framework is a registered trademark of Tridium, Inc.; Windows XP, Windows Vista, Microsoft Access and Microsoft Excel are registered trademarks of Microsoft Corporation. All other trademarks are property of their respective owners.



05DI-DSL3XX-20

Londisplay 3

www.distech-controls.com