

## Lonwatcher 3

### easyCONTROLS LONWORKS Network Management Tool

**Includes:**

- Lonwatcher 3 Network Management Tool
- LNS 3.2 TURBO Edition Network Operating System
- Distech Controls Browser
- Distech Controls MiniDirector



### Features

#### Lonwatcher 3

- Build, commission and maintain multi-vendor, open and interoperable LONWORKS® networks.
- Manage multiple LONWORKS networks simultaneously.
- Batch operations to copy/paste multiple networks, subsystems and devices reducing time for commissioning, replacing and loading devices.
- Compatible with other LNS® databases created with any LNS network management tool.
- Supports LNS standard plug-in applications, allowing for easy integration of Distech Controls devices as well as other manufacturers' devices.
- Create device status reports to get information such as devices in override, in alarm, etc.
- Fully supports i.LON® Internet Servers.
- Create dynamic network variables.
- User Manager, to prevent unauthorized system access, and to manage user rights.
- Support of any LNS or IP network interfaces.

#### LNS TURBO Edition

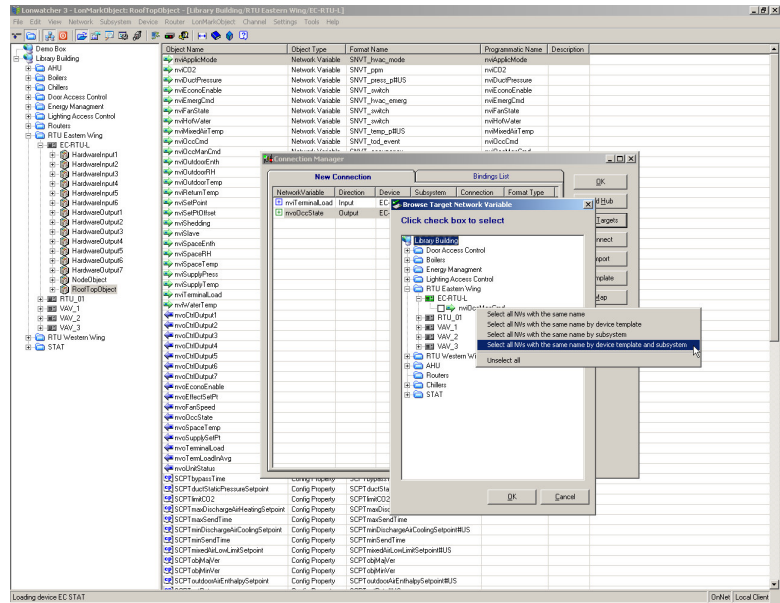
- Includes LNS® TURBO Edition network operating system.
- Open databases, register plug-ins or browse devices up to 10 times faster than with any previous version.

#### Distech Controls Browser

- Uses Distech Controls Browser plug-in, to monitor and manage network variables as well as configuration properties.
- Lonwatcher 3 offers enhanced functionality to browse network variables or configuration properties of the same type in one operation.

#### Distech Controls MiniDirector

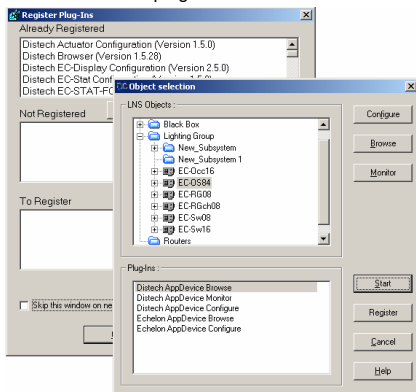
- Acts as an independent director to launch plug-ins and configure devices.
- Can be used by non-LNS software to launch Distech Controls plug-ins.



The Lonwatcher 3 network management tool is an innovative software for fast set-up and cost efficient implementation of the easyCONTROLS system, as well as other multi-vendor open and interoperable LONWORKS networks, and their interaction. This intuitive yet sophisticated tool provides network integrators with advanced features and all the resources necessary to install, operate and maintain LONWORKS networks. Based on LNS TURBO Edition network operating system, Lonwatcher is a performance-driven, high-speed application, allowing a fast response time from the application and increasing user productivity.

Lonwatcher is a tree-view oriented program, promoting a user-friendly interface and intuitive navigation through the network, regardless of the amount of devices. Through context sensitive menus and dynamically enabled toolbars, all device, channel, subsystem, functional object and network variable operations can be easily set-up and maintained. Advanced features allow moving or copying devices or entire subsystems in one simple operation.

Lonwatcher presents multiple modular applications such as the Binding Manager and the Distech Controls Browser. The Binding Manager is designed to create network connections and with a network variables filter, it quickly determines which network variables are compatible. The Distech Controls Browser monitors network variables and configuration property values during operation, allowing for fast and easy troubleshooting.



Distech Controls' quality management system is ISO 9001:2000 certified

## Features

### Create a network

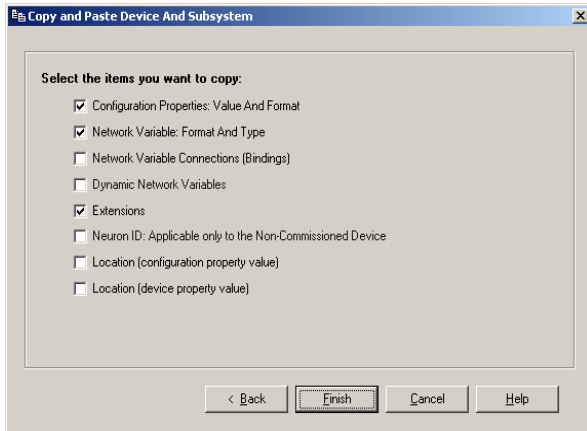
- Create new networks, and add new subsystems, channels, routers and devices.
- Configure the network offsite by working unattached from the network interface, or in OffNet management mode.
- Manage devices and routers. Test, reset, enable / disable override, wink and monitor device errors.
- Supports requests on LONMARK® objects such as disable, update status, self test and override among many others.
- Easier network maintenance with the replace function as well as the load function that allows to easily update the device application program.

### Manage multiple networks/databases simultaneously

- Install and maintain projects comprising multiple networks.
- Copy / Paste multiple database with a single operation.
- Copy / Paste devices and subsystems between networks.
- Create your personal device template database.

### User productivity improvements (batch operations)

- Copy / Paste multiple subsystems, including associated devices with one operation.
- Copy / Paste multiple devices (including bindings) with one operation.
- Copy / Paste configuration properties on a collection of devices with one operation.
- Create multiple subsystems with one operation.
- Create multiple devices of same type with one operation.
- Multi-device operations reduce time to commission, replace and load devices.
- Network variable type filter as well as multi-variable selection when selecting network variables for a binding.
- One click selection of network variables for fan-in / fan-out connections (all of same name, all of same name and device type).
- Export a device's properties as an .xml file which can then be imported into one or more devices of the same type.



### Network Explorer

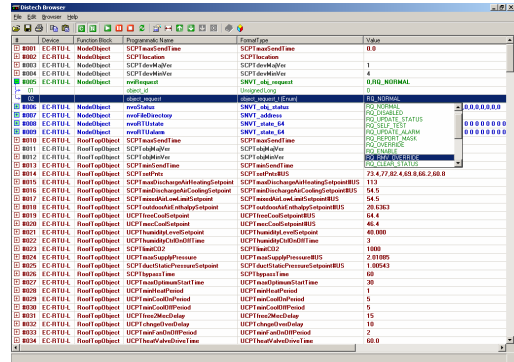
- Explore a network by channel (physical view) or by subsystem (logical view).
- Combined tree view and list view allows to navigate the network down to the level of network variables and configuration properties.
- Comprehensive property view on all object levels.

### Host-based node support

- Create network interface devices for all supervisory stations in a network.
- Create dynamic network variables for devices that support this feature.
- Create entire set of dynamic network variables in one operation.

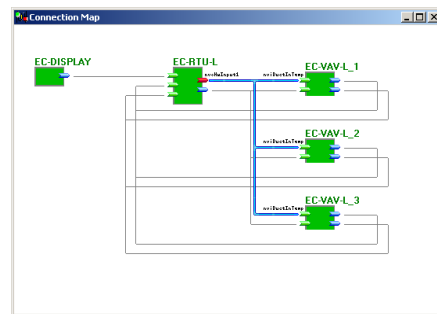
### Enhanced Distech Controls Browser support

- Browse all network variables or configuration properties of same name throughout a subsystem or network in one operation.
- Browse all network variables or configuration properties of same name and type throughout a subsystem or network in one operation.
- Drag and drop selections of network variables and configuration properties from the network explorer to the browser.



### Other new features

- Visual binding map to review network connections.
- Session log with user name and time stamp to track all database / network manipulations and errors.
- Backup / Restore / Import / Defragment database.
- Connection template management.
- Router management.
- Device status report generator allows you to generate reports on the network containing information such as the number of devices on the network, the status of the devices (Ex.: Is the device in alarm? Is the device in override?).



## System Requirements

### With Windows XP Operating System:

- Operating System: Windows XP
- Processor: 500 MHz processor or higher
- Memory: 256 MB RAM minimum
- Hard Drive: 500 MB minimum of free hard disk space
- Display: Minimum – Super VGA (800x600); Recommended – 1024x768

### With Windows Vista Operating System:

- Operating System: Vista Home Premium, Vista Business or Vista Ultimate
- Processor: 1 GHz processor or higher
- Memory: 1 GB RAM minimum
- Hard Drive: 40 GB hard drive with minimum 15 GB or free disk space
- Display: 128 MB video card minimum

### Specifications subject to change without notice.

easyCONTROLS and Distech Controls logos are trademarks of Distech Controls Inc.; iLON, LONWORKS and LNS are registered trademarks of Echelon Corporation. Windows XP and Windows Vista are registered trademarks of Microsoft Corporation.



07DI-DSLW3XX-22

# Lonwatcher 3

Distech Controls, Inc.  
Tel. toll-free North America: 1-800-404-0043  
Tel. international: 1-450-444-9898  
www.distech-controls.com  
sales@distech-controls.com