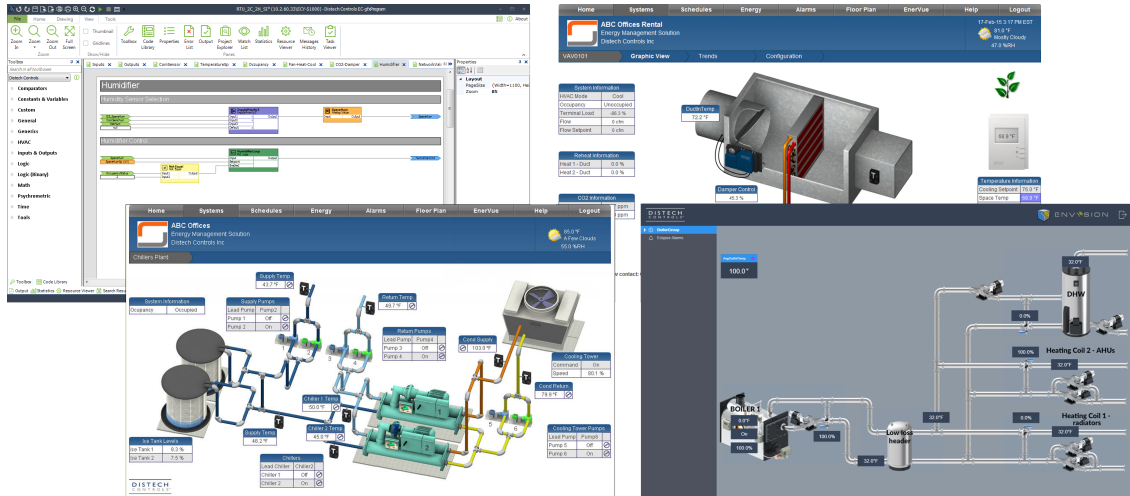




Productivity Enhancing Tools

Applications and graphics for Distech Controls controllers



Overview

Distech Controls has built a cohesive package of tools designed to reduce commissioning time and provide easy to build, esthetically pleasing, user interfaces. *gfxApplications* is a library of pre-engineered sequences embedded within *EC-gfxProgram*. *dclimages* is a comprehensive module of over 700 pre-animated HVAC components. *dc gfxApplications* provides pre-engineered applications complete with ready-to-use graphics. *ENVYSION* is a web-based graphic design and visualization interface used to deliver an interactive graphical user interface.

Found within the code library section of *EC-gfxProgram*, *gfxApplications* provides a comprehensive library of pre-engineered codes. Once a code has been dropped into a programming sheet the sequence is clearly explained and code snippets are provided so tweaking is intuitive and painless.

Applications

- Pre-engineered HVAC Applications for *EC-gfxProgram*
- Pre-engineered HVAC Graphics for the *EC-Net* solution
- Create various HVAC Systems within the *EC-Net* solution
- Create complex sequences based on supplied code
- Pre-engineered terminal applications for quick installation

Features & Benefits

Save Programming Time and Reduce Engineering Costs

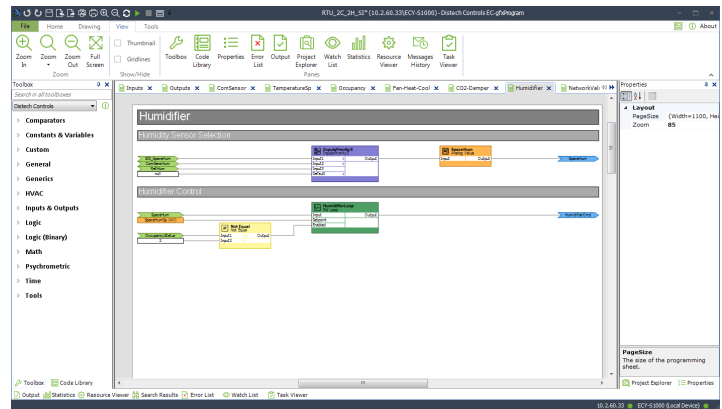
- Reduce engineering time and complement ECB Series BACnet®, ECL Series LONWORKS®, and ECY ECLYPSE™ Series controllers
- Reduce programming errors by using pre-engineered HVAC applications
- Pre-engineered, pre-animated *EC-Net* modules allow easy drag-and-drop creation of system graphics
- Provided code allows easy customization for advanced control and system requirements
- dc gfxApplications* provides configuration pages which can be used by entry level agents and balancing technicians
- Provided Building Information Modeling (BIM) files allow for comprehensive 3D design and improved optimization
- VAV controllers come preloaded with *ENVYSION* graphics
- Available pre-engineered *xpressENVYSION* templates for Air Handling Units (AHU) and Boiler systems
- The *VEXX* cloud-based platform simplifies ordering of factory installed custom pre-engineered code

Available Tools

While independently powerful and intuitive, the sheer power and measurable efficiencies come when the following tools are used together.

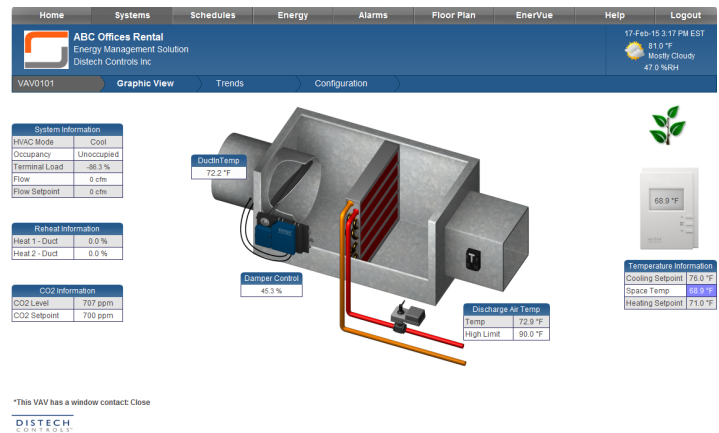
gfxApplications

gfxApplications is a comprehensive library of pre-engineered codes for EC-gfxProgram.



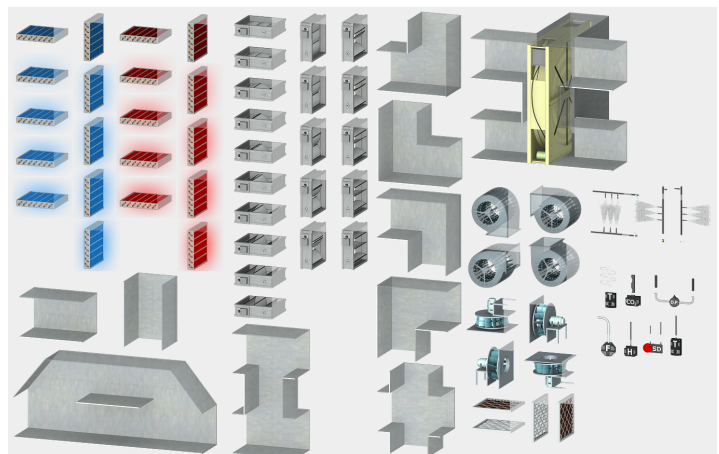
dc gfxApplications

dc gfxApplications is a complete set of pre-built devices with corresponding proxy points, logs, alarms, code and EC-Net graphic pages (PX) for display and configuration. It allows you to drag and drop pre-engineered devices and have a working device, direct from the manufacturer, complete with code and graphics, in minutes. dc gfxApplications also allows devices to be configured using configuration pages provided or customize the code using EC-gfxProgram.



dclmages

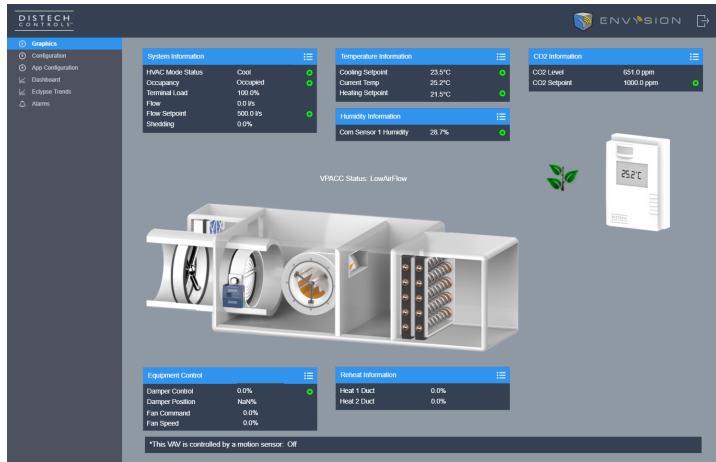
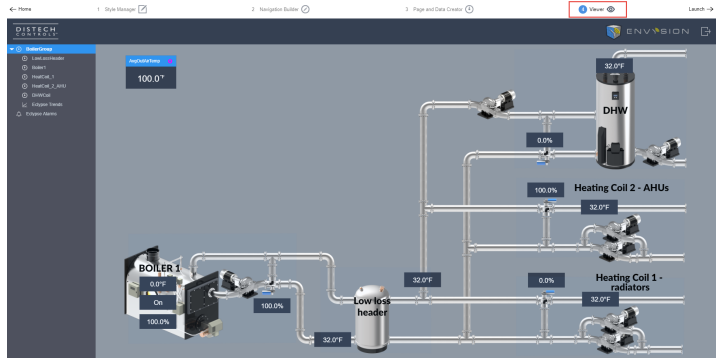
dclmages is an EC-Net module that provides an extensive library of equipment and components needed to consistently assemble high-end system graphics, so you can spend less time assembling graphics and further distinguish your organization's graphics that are competitive in today's industry. Systems such as variable air volume boxes, air handling units, fan coil units, roof tops, central plants, and more can be created.



ENVYSION

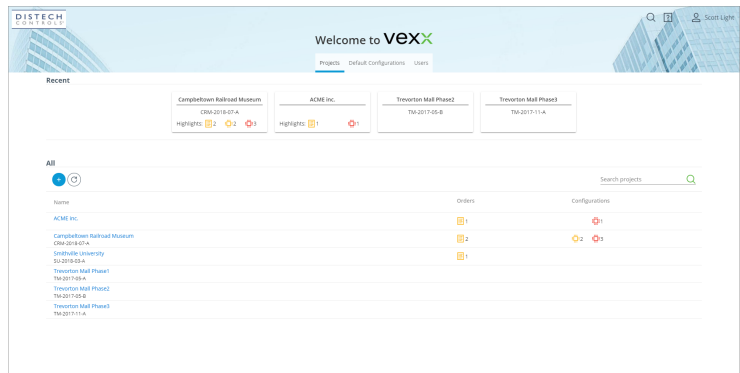
ENVYSION is a web-based graphic design and visualization interface used to deliver interactive graphical user interfaces and an optimal user experience for building owners and facility managers to better manage facility data.

System integrators can use xpressENVYSION, a workflow oriented “drag & drop” Graphical User Interface (GUI) tool, to easily provide end-users with cost and time saving analytical tools for their buildings including dashboards, playback, alarm consoles, and more. Also deliver dynamic and interactive content such as floor layouts with heat/cool maps, graphics, charts, dynamic equipment views, and more.



VEXX

VEXX is a cloud-based platform that allows for factory shipping of your Distech Controls' ECB Series BACnet®, ECL Series LONWORKS®, and ECLYPSE™ ECY Series controllers with your custom pre-engineered code. Within the VEXX cloud environment you can create different customized application profiles for your orders and projects. You can also manage the defined users of your account. This enables faster commissioning and configuration of controllers and reduces the total installation cost.



Specifications subject to change without notice.

Distech Controls, the Distech Controls logo, Innovative Solutions for Greener Buildings, EC-Net, ECO-Vue, Allure, and Open-To-Wireless are trademarks of Distech Controls Inc.; LonWorks, LON, and LNS are registered trademarks of Echelon Corporation; BACnet is a registered trademark of ASHRAE; BTL is a registered trademark of the BACnet Manufacturers Association; Niagara Framework is a registered trademark of Tridium, Inc.; EnOcean is a registered trademark of EnOcean GmbH. All other trademarks are property of their respective owners.

©, Distech Controls Inc., 2015 - 2018. All rights reserved.

Global Head Office - 4205 place de Java, Brossard, QC, Canada, J4Y 0C4 - EU Head Office - ZAC de Sacuny, 558 avenue Marcel Mérieux, 69530 Brignais, France